

MILESTONES

- ♥ **GESTATIONAL AGE:** 40 WEEKS
- ♥ **PREMATURE BABY:** < 36 WEEKS
- ♥ **CHRONOLOGICAL AGE:** BASE ON BABY'S DELIVERY



- ♥ **CORRECTED AGE:** CHRONOLOGICAL AGE - WEEK/MONTHS PREMATURE (UP TO AGE OF 2)

CHECK POINTS IN A CHILD DEVELOPMENT TO DETERMINE WHAT THE AVERAGE CHILD IS ABLE TO DO AT A PARTICULAR AGE



1 TO 3 MONTHS (HEAD STABILITY)

- ♥ TRACK OBJECT WITH HEAD ROTATION (1 MONTH)
- ♥ PRONE ON ELBOWS WEIGHT BEARING ON FOREARM (3 MONTHS)
- ♥ HEAD RIGHTING REFLEX (3 MONTHS)



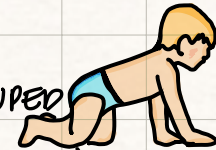
4 TO 6 MONTHS

- ♥ UNILATERAL PALMAR GRASP 4 MONTHS
- ♥ SITS WITH SUPPORT 4 MONTHS
- ♥ ROLLS PRONE TO SUPINE 5 MONTHS
- ♥ INDEPENDENT SITTING 6 MONTHS
- ♥ ROLLS SUPINE TO PRONE 6 MONTHS (THE MOST DIFFICULT)



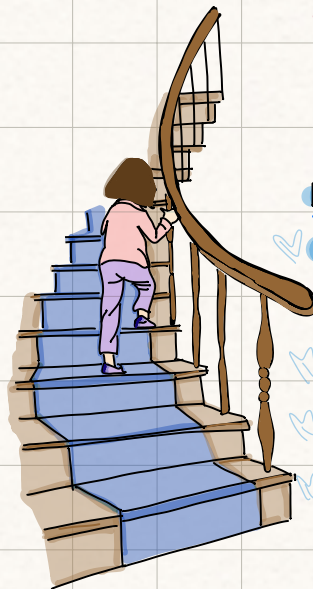
7 TO 9 MONTHS

- ♥ ASSUMING QUADRUPED (7 MONTHS)
- ♥ CREEPING (8-9 MONTHS)
- ♥ PULLS TO STAND AT FURNITURE (8 TO 9 MONTHS)
- ♥ TRANSFER OBJECTS FROM HAND TO HAND (8 TO 9 MO)
- ♥ CRAWLING SIDE TO SIDE (8-9 MONTHS)



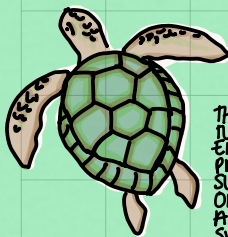
18 MONTHS TO 2 YEARS

- ♥ ASCENDING STAIRS (STEP TO PATTERN) 18M
- ♥ RUNS WELL (2 YEARS)
- ♥ ASCENDING STAIRS (RECIPROCAL) (2 YEARS)
- ♥ JUMPS WITH 2 FEET (2 YEARS)
- ♥ CATCHES LARGE BALLS (2 YEARS)



10 TO 12 MONTHS

- ♥ SELF FEEDING (10+ MONTHS)
- ♥ INDEPENDENT AMBULATION (14)
- ♥ CREEPS UP STAIRS (14)
- ♥ BUILD A TOWER



STRUGGLING WITH SUPINE/PRONE MILESTONE?

THINK OF A TURTLE THEY EASILY TURN PRONE TO SUPINE BUT ONE THEY ARE IN SUPINE "IT TAKE THEM 6 MONTHS TO TURN FROM SUPINE TO PRONE"

@FISIOAIE PTHUSNE

PRIMITIVE REFLEXES



OBLIGATORY REFLEXES:

POSTURE OR MOVEMENT
DOMINATED BY A REFLEX.
GENERALLY PERSISTENT
OR PRIMITIVE REFLEX
BEYOND THE TIME THAT
IT SHOULD BE INTEGRATED.

ASYMMETRICAL TONIC NECK REFLEX

AKA FENCING REFLEX

FACE TURNS TO ONE SIDE =
ARM ⊕ LEG SAME SIDE IS EXTENDED
⊕ OPPOSITE SIDE IS FLEXED

Ⓛ 6 MONTHS / SUPINE TO PRONE

INVOLUNTARY
RESPONSE TO A STIMULI WHICH
REPRODUCES A CHARACTERISTIC
BEHAVIOR.

SYMMETRICAL TONIC NECK REFLEX (STNR)

PROVIDES SEPARATION OF THE
BODY MOVEMENT BETWEEN
UPPER AND LOWER HALF OF
THE BODY

PROVOKE BY HEAD
MOVEMENT

Ⓛ 8 MONTHS (CREEPING)

INTEGRATED REFLEXES

INHIBITION BY HIGHER CENTERS
OF NEUROLOGICAL CONTROL
WHICH MODIFY THE REFLEX
IN SUCH A WAY THAT THE
PATTERN OF RESPONSE IS
NO LONGER STEREOTYPICAL

@FISIOMAE
PTUSNE



PLANTAR GRASP

PRONE ON HANDS

Ⓛ (6 MONTHS)

PEDIATRIC INTERVENTION ALGORITHM

DEVELOPMENTAL AGE

WHAT DO YOU WANT THEM
TO BE ABLE TO DO
(I.E GOAL / NEXT LEVEL)

FIND AN INTERVENTION THAT
WILL SOLVE THE PRIMARY
IMPAIRMENT ⊕ HELP TO
ACHIEVE THE ULTIMATE GOAL

Ⓛ INTEGRATION
AGE